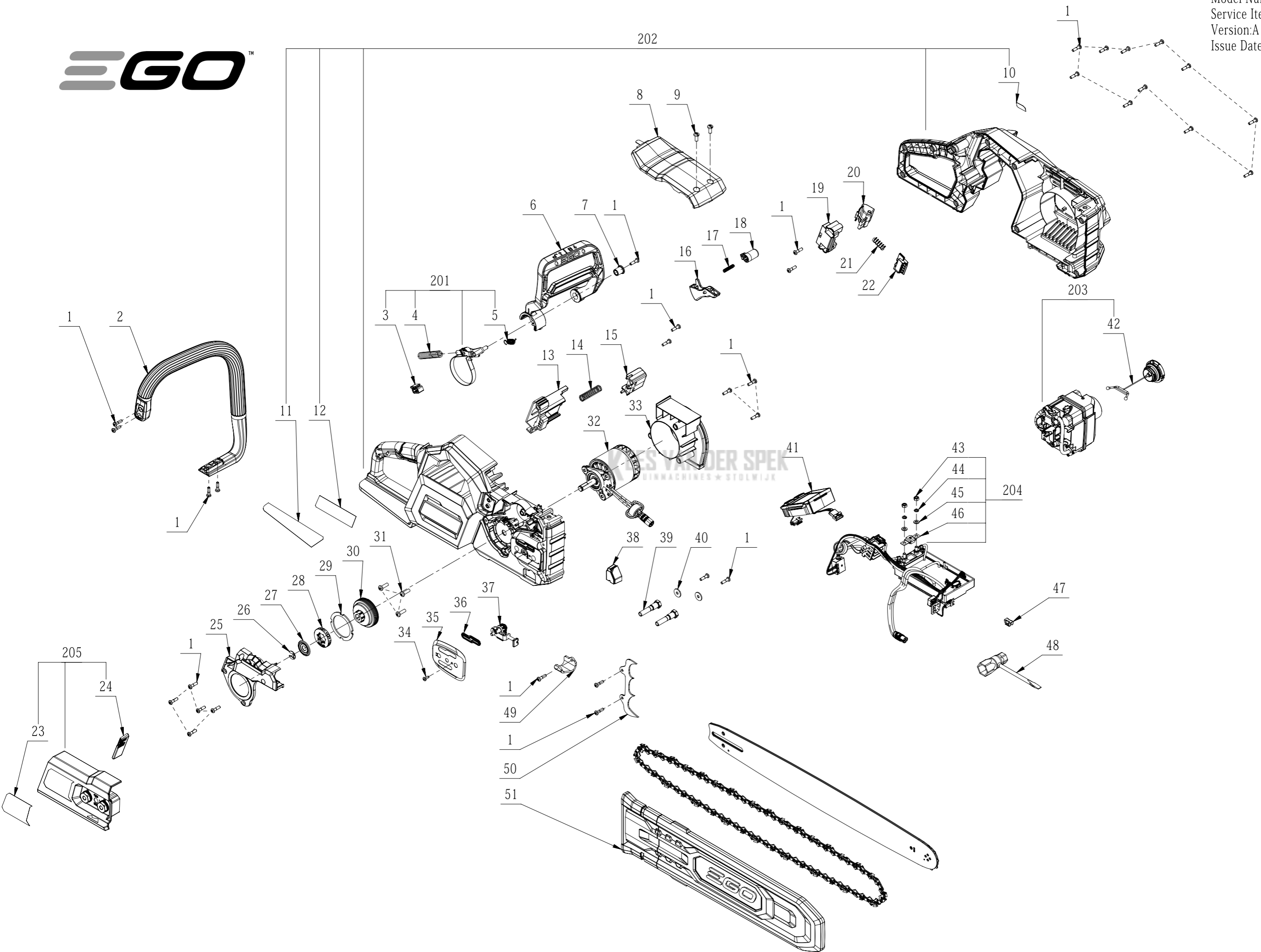




Product Description: Chain Saw  
Model Number: CS2000E  
Service Item Number: F840041004S01  
Version: A  
Issue Date: 2023/08/01



| Index No. | Art. No.   | Description EN           | Partnumber | QTY in machine |
|-----------|------------|--------------------------|------------|----------------|
| 1         | 5620479001 | Screw                    | 5620479001 | 33             |
| 2         | 3135190001 | Front Handle             | 3135190001 | 1              |
| 3         | 3521237001 | Fixed Unit               | 3521237001 | 1              |
| 4         | 3660803001 | Compression Spring       | 3660803001 | 1              |
| 5         | 3660802001 | Tension Spring           | 3660802001 | 1              |
| 6         | 2850741001 | Brake Handle Assembly    | 2850741001 | 1              |
| 7         | 3580556001 | Bushing                  | 3580556001 | 1              |
| 8         | 3323695001 | Top Cover                | 3323695001 | 1              |
| 9         | 5620566001 | Hexalobular Socket Screw | 5620566001 | 2              |
| 10        | 2246036006 | Nameplate                | 2246036006 | 1              |
| 11        | 2246036010 | Nameplate                | 2246036010 | 1              |
| 12        | 2246036009 | Nameplate                | 2246036009 | 1              |
| 13        | 3132739001 | Push-out Lever Bracket   | 3132739001 | 1              |
| 14        | 3660979001 | Compression Spring       | 3660979001 | 1              |
| 15        | 3131427001 | Sliding Block            | 3131427001 | 1              |
| 16        | 2850767001 | Switch Trigger Set       | 2850767001 | 1              |
| 17        | 3660427002 | Spring                   | 3660427002 | 1              |
| 18        | 3135018001 | Lock off Button          | 3135018001 | 1              |
| 19        | 3127507001 | Support                  | 3127507001 | 1              |
| 20        | 3127498001 | Power Pack Button        | 3127498001 | 1              |
| 21        | 3660013001 | Spring1                  | 3660013001 | 1              |
| 22        | 3127497001 | Power Pack Button        | 3127497001 | 1              |
| 23        | 2246036008 | Nameplate                | 2246036008 | 1              |
| 24        | 3135070001 | Baffle                   | 3135070001 | 1              |
| 25        | 3135189001 | Brake Cover Plate        | 3135189001 | 1              |
| 26        | 5660242001 | "E" Ring                 | 5660242001 | 1              |
| 27        | 3709185001 | Baffle Piece             | 3709185001 | 1              |
| 28        | 3556131001 | Chain Wheel              | 3556131001 | 1              |
| 29        | 5690440001 | Felt Ring                | 5690440001 | 1              |
| 30        | 3556112001 | Brake Disc               | 3556112001 | 1              |
| 31        | 5620051010 | Screw                    | 5620051010 | 3              |
| 32        | 2730415004 | DC Motor                 | 2730415004 | 1              |
| 33        | 3135024001 | Fan Baffle               | 3135024001 | 1              |
| 34        | 5610295001 | Hexagon Socket Screw     | 5610295001 | 1              |
| 35        | 3709181001 | Protecting Cover Plate   | 3709181001 | 1              |
| 36        | 3135025001 | Rubber Gasket            | 3135025001 | 1              |
| 37        | 2850738001 | Tensioning Subassembly   | 2850738001 | 1              |
| 38        | 3135013001 | Lamp Housing             | 3135013001 | 1              |
| 39        | 5640539001 | Hexagon Head Bolt        | 5640539001 | 2              |
| 40        | 5650487001 | Plain Washer             | 5650487001 | 2              |
| 41        | 2831964001 | LCD Electric Assembly    | 2831964001 | 1              |
| 42        | 2828587001 | Kettle Cover Assembly    | 2828587001 | 1              |
| 43        | 5630003003 | Hexagon Nut              | 5630003003 | 4              |
| 44        | 5650015003 | Spring Washer            | 5650015003 | 2              |
| 45        | 5650011003 | Plain Washer             | 5650011003 | 4              |
| 46        | 4970355001 | Fuse                     | 4970355001 | 1              |
| 47        | 3703673002 | Bits Holder              | 3703673002 | 1              |
| 48        | 5680375001 | Socket Wrench            | 5680375001 | 1              |
| 49        | 3709191001 | Chip Shield              | 3709191001 | 1              |

|     |            |                      |            |   |
|-----|------------|----------------------|------------|---|
| 50  | 3708646001 | Wood Teeth           | 3708646001 | 1 |
| 51  | 3135119001 | Sheath               | 3135119001 | 1 |
| 201 | 2850739001 | Brake Assembly       | 2850739001 | 1 |
| 202 | 2850746002 | Housing Assembly     | 2850746002 | 1 |
| 203 | 2850747001 | Kettle Assembly      | 2850747001 | 1 |
| 204 | 2832038001 | Electric Assembly    | 2832038001 | 1 |
| 205 | 2850582003 | Cover Plate Assembly | 2850582003 | 1 |