



## CS2000E



With a 25m/s chain speed, the CS2000E offers the highest specification for domestic use. The innovative display helps you to keep track of your battery level, and also allows you to change the chain speed to match the task at hand.

### Product Details

Model Name	50cm CHAINSAW
------------	---------------

### Marketing Information

Model Name	50cm CHAINSAW
------------	---------------

PDP Short Description	With a 25m/s chain speed, the CS2000E offers the highest specification for domestic use. The innovative display helps you to keep track of your battery level, and also allows you to change the chain speed to match the task at hand.
-----------------------	---

Long Description	The CS2000E is EGO's highest specification chainsaw for domestic use, boasting 25m/s chain speed and a new configuration for improved balance and handling, ideal for cutting thick branches and larger logs up to 50cm (19.6 inches) in width. Features a new innovative display showing battery charge level and speed setting. The EGO Power+ chainsaws are built to tackle even the hardest jobs. Trunks, logs, branches, nothing gets in their way.
------------------	--

Packaging Contains	1x 50cm Chainsaw [CS2000E]
--------------------	----------------------------

### Technical Specifications

Chain Speed	25 m/s
-------------	--------

Sproket	7
---------	---

IP Class	IPX4
----------	------

Chain Drive Links	69
-------------------	----

Tool Free Tension Adjustment Type	Tooled
-----------------------------------	--------

Oil Feeding Type	Auto
------------------	------

Oil Level Indicator Type	1
Spikes Material	Metal
LED	Yes
Variable Speed Control	Yes
Front Brake Pedal	Yes
Rear Main Handle Brake	Yes
Bar Length (cm)	50
Chain / Bar Gauge (mm)	1.27
Chain / Bar Pitch (mm)	9.5
File Size (mm)	4
Oil Tank Volume (ml)	250
Tool Length (mm)	950
Tool Width (mm)	230
Tool Height (mm)	280
Tool Weight (With Chain And Bar) (kg)	5.9
Battery Port	Single Port
Chain Bar Size	20 cm
Chain Brake	Mechanical

## Marketing Features

Oil Feeding Type	Auto
Spikes Material	Metal
Tool Free Tension Adjustment Type	Tooled
Front Brake Pedal	Yes
LED	Yes
Oil Level Indicator Type	1
Rear Main Handle Brake	Yes

Variable Speed Control Yes

## Packaging Details

Packaging Type	Item	Single Pack	Master Pack Outer Carton (Kraft)
Packaging Measurement Unit Type	Metric	Metric	Metric
Quantity	1	1	2
Weight		6.30	17.00
Weight Unit		Kilogram	Kilogram
Height (H)		31.5	33.5
Height Unit		Centimetre	Centimetre
Width (L)		60.5	77.5
Width Unit		Centimetre	Centimetre
Depth (W)		37	62.5
Depth Unit		Centimetre	Centimetre
Gross Weight Incl Packaging		8.50	19.20
Gross Weight Incl Packaging Unit		Kilogram	Kilogram
Commodity Code / Tariff Code		8467221000	
Item Number			

## Accessories

EGO AC2005 50cm REPLACEMENT CHAINSAW CHAIN FOR CS2000E



**KEES VAN DER SPEK**  
TUINMACHINES \* STOLWIJK

## Main

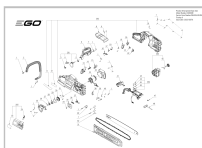


CS2000E\_EGOEU\_CHAINSAW\_MAIN\_01.psd

Date created: 2023-10-10T05:56:07:000+0000

Date Changed: 2023-10-10T05:54:20:000+0000

## Explosion Diagrams

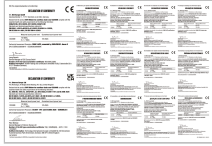


23-1220\_Exploded drawing\_CS2000E\_A\_Service.pdf

Date created: 2023-12-21T01:59:43:000+0000

Date Changed: 2023-12-21T01:24:55:000+0000

## Compliance Reports



CE\_EGO\_CS2000E\_EV01.31\_231015.pdf

Date created: 2023-11-29T03:21:24:000+0000

Date Changed: 2023-10-16T07:23:44:000+0000

CONFIDENTIAL.

Page 0CP / 0NP

**KEES VAN DER SPEK**  
TUINMACHINES ★ STOLWIJK