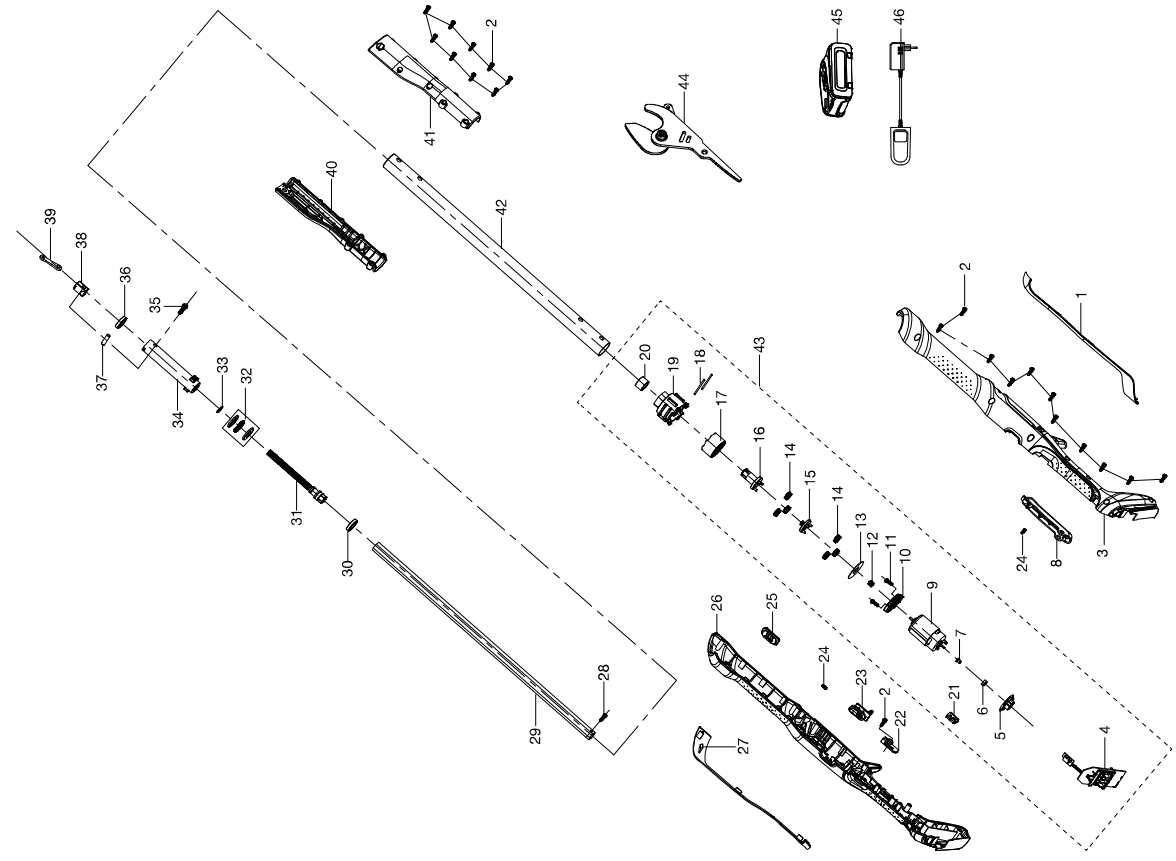


KEES VAN DER SPEK  
TUINMACHINES \* STOLWIJK



| Bild Nr.<br>Picture No. | Ersatzteil-Nr.<br>Spare Part No. | Bezeichnung | Description | Désignation |
|-------------------------|----------------------------------|-------------|-------------|-------------|
|-------------------------|----------------------------------|-------------|-------------|-------------|

**Art. 14772**

|    |                 | <b>Akku-Baumschere EasyCut 110/18V P4A</b> | <b>Battery Pruning Lopper EasyCut 110/18V P4A</b> | <b>Coupe-branches EasyCut 110/18V P4A</b> |
|----|-----------------|--|---|---|
| 8  | 14776-00.640.07 | Drücker                                    | Trigger   | Gâchette                                  |
| 22 | 14776-00.640.06 | Kabelhalter                                | Cable clip  | Support cable                             |
| 23 | 14776-00.640.08 | Schieber                                   | Slide   | Verrou                                    |
| 24 | 9870-00.600.25  | Feder                                      | Spring  | Ressort                                   |
| 25 | 14700-00.600.01 | LED Anzeige                                | LED Display                                       | Indicateur à LED                          |
| 30 | 14776-00.620.17 | Lager                                      | Bearing   | Palier                                    |
| 32 | 14776-00.620.16 | Lager                                      | Bearing   | Palier                                    |
| 33 | 14776-00.620.15 | Scheibe                                    | Disc  | Disque                                    |
| 34 | 14776-00.620.07 | Abdeckung                                  | Cover   | Couvercle                                 |
| 35 | 14776-00.620.11 | Schraube                                   | Screw   | Vis                                       |
| 36 | 14776-00.620.08 | Ring                                       | Ring  | Anneau                                    |
| 37 | 14776-00.620.10 | Buchse                                     | Bush  | Douille                                   |
| 38 | 14776-00.620.09 | Stopfen                                    | Plug  | Bouchon de fermeture                      |
| 39 | 14776-00.620.14 | Platte                                     | Plate   | Plaque                                    |
| 43 | 14772-00.901.00 | Motor mit Elektronik                       | Motor with electronic circuit                     | Moteur avec électronique                  |
| 44 | 14776-00.610.00 | Messer vollst.                             | Blade, cpl.                                       | Lame, cpl.                                |
| 45 | 14902-00.600.00 | Batterie PBA 18V/36 P4A (Art. 14902-20)    | Battery PBA 18V/36 P4A (Art. 14902-20)            | Batterie PBA 18V/36 P4A (Réf. 14902-20)   |
| 45 | 14903-00.600.00 | Batterie PBA 18V/45 P4A (Art. 14903-20)    | Battery PBA 18V/45 P4A (Art. 14903-20)            | Batterie PBA 18V/45 P4A (Réf. 14903-20)   |
| 45 | 14905-00.600.00 | Batterie PBA 18V/72 P4A (Art. 14905-20)    | Battery PBA 18V/72 P4A (Art. 14905-20)            | Batterie PBA 18V/72 P4A (Réf. 14905-20)   |
| 46 | 14900-00.600.00 | Ladegerät AL 1810 CV P4A (Art. 14900-20)   | Charger AL 1810 CV P4A (Art. 14900-20)            | Chargeur AL 1810 CV P4A (Réf. 14900-20)   |

**Art. 14774**

|    |                 | <b>Akku-Teleskop-Baumschere HighCut 250/18V P4A</b> | <b>Battery Telescopic Pruning Lopper HighCut 250/18V</b> | <b>Coupe-branches HighCut 250/18V P4A</b> |
|----|-----------------|---|--|---|
| 1  | 14776-00.640.00 | Griff, vollst.                                      | Handle cpl.  | Poignée cpl.                              |
| 2  | 14776-00.620.00 | Schneidkopf vollst.                                 | Cutting unit, cpl.                                       | Unité de coupe, cpl.                      |
| 8  | 14776-00.640.07 | Drücker   | Trigger  | Gâchette                                  |
| 23 | 9870-00.600.25  | Feder   | Spring   | Ressort                                   |
| 24 | 14776-00.640.08 | Schieber  | Slide  | Verrou                                    |
| 25 | 14700-00.600.01 | LED Anzeige   | LED Display  | Indicateur à LED                          |
| 31 | 14776-00.640.21 | Überwurfmutter                                      | Union nut  | Écrou-raccord                             |
| 48 | 14776-00.901.00 | Motor mit Elektronik                                | Motor with electronic circuit                            | Moteur avec électronique                  |
| 54 | 14776-00.620.37 | Knopf   | Button   | Bouton                                    |
| 56 | 14776-00.620.25 | Bolzen  | Bolt   | Boulon                                    |
| 58 | 14776-00.620.04 | Lager   | Bearing  | Palier                                    |
| 59 | 14776-00.620.03 | Zahnrad   | Gear wheel   | Pignon                                    |
| 60 | 14776-00.620.17 | Lager   | Bearing  | Palier                                    |
| 61 | 14776-00.620.18 | Lager   | Bearing  | Palier                                    |
| 62 | 14776-00.620.23 | Adapter   | Adapter  | Adaptateur                                |
| 63 | 14776-00.620.05 | Zahnrad   | Gear wheel   | Pignon                                    |
| 65 | 14776-00.620.06 | Feder   | Spring   | Ressort                                   |
| 67 | 14776-00.620.24 | Schraube  | Screw  | Vis                                       |
| 68 | 14776-00.620.22 | Scheibe   | Disc   | Disque                                    |
| 70 | 14776-00.620.34 | Schraube  | Screw  | Vis                                       |
| 71 | 14776-00.620.35 | Seil  | Cord   | Corde                                     |
| 74 | 14776-00.620.16 | Lager   | Bearing  | Palier                                    |
| 75 | 14776-00.620.15 | Scheibe   | Disc   | Disque                                    |
| 76 | 14776-00.620.07 | Abdeckung   | Cover  | Couvercle                                 |
| 77 | 14776-00.620.11 | Schraube  | Screw  | Vis                                       |
| 78 | 14776-00.620.10 | Buchse  | Bush   | Douille                                   |
| 79 | 14776-00.620.08 | Ring  | Ring   | Anneau                                    |
| 80 | 14776-00.620.09 | Stopfen   | Plug   | Bouchon de fermeture                      |
| 81 | 14776-00.620.14 | Platte  | Plate  | Plaque                                    |
| 82 | 14776-00.610.00 | Messer vollst.                                      | Blade, cpl.  | Lame, cpl.                                |
| 83 | 14776-00.600.05 | Haken   | Crook  | Crochet                                   |
| 84 | 14902-00.600.00 | Batterie PBA 18V/36 P4A (Art. 14902-20)             | Battery PBA 18V/36 P4A (Art. 14902-20)                   | Batterie PBA 18V/36 P4A (Réf. 14902-20)   |
| 84 | 14903-00.600.00 | Batterie PBA 18V/45 P4A (Art. 14903-20)             | Battery PBA 18V/45 P4A (Art. 14903-20)                   | Batterie PBA 18V/45 P4A (Réf. 14903-20)   |
| 84 | 14905-00.600.00 | Batterie PBA 18V/72 P4A (Art. 14905-20)             | Battery PBA 18V/72 P4A (Art. 14905-20)                   | Batterie PBA 18V/72 P4A (Réf. 14905-20)   |
| 85 | 14900-00.600.00 | Ladegerät AL 1810 CV P4A (Art. 14900-20)            | Charger AL 1810 CV P4A (Art. 14900-20)                   | Chargeur AL 1810 CV P4A (Réf. 14900-20)   |

**Art. 14776**

|   |                 | <b>Akku-Teleskop-Baumschere HighCut 360/18V P4A</b> | <b>Battery Telescopic Pruning Lopper HighCut 360/18V</b> | <b>Coupe-branches HighCut 360/18V P4A</b>     |
|---|-----------------|---|--|---|
| 3 | 14776-00.630.00 | Rohrverlängerung vollst.                            | Extension tube   | Tube prolongateur                             |
|   |                 | Nur die aufgeführten Teile sind lieferbar!          | Only the mentioned spare parts are available!            | Seules les pièces indiquées sont disponibles! |