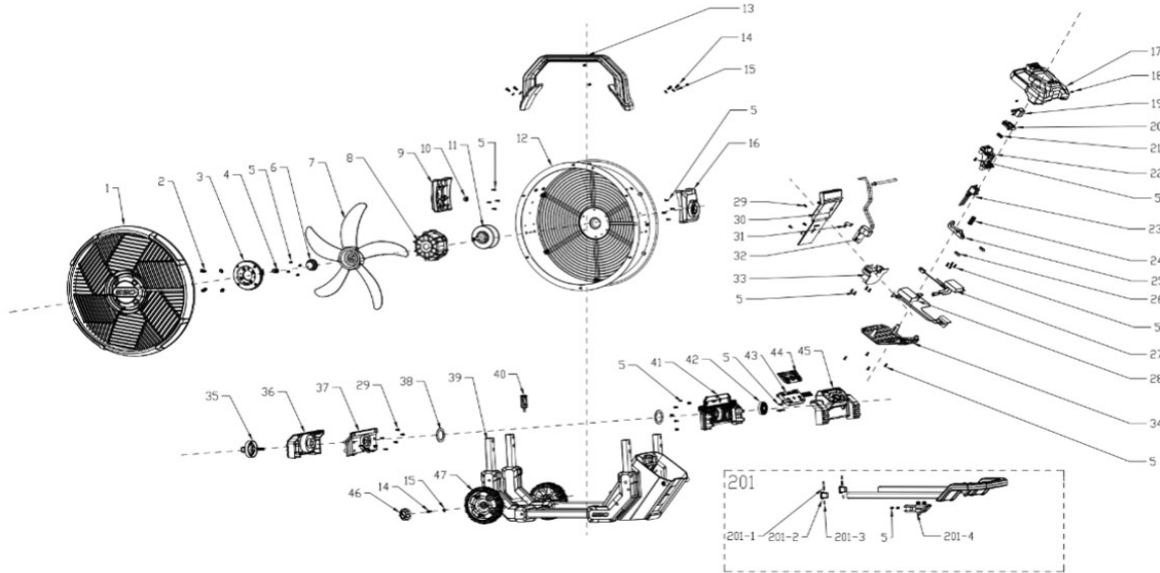


FN1800E

Lifestyle



Product Description: Misting Fan  
 Model Number: FN1800E  
 Body Number: FC20022048  
 Version: A  
 Issue Date: 2022/12/1



Index No.	Art. No.	Description EN	QTY in machine
1	3133841001	Front Frame Mesh	1
2	2828912001	Misting Nozzle	4
3	2828911001	Waterway set	1
4	4931130001	Tube Connector	1
5	5610903001	ST4 Torx type tapping screw	41
6	3403403001	Fan Locking Knob	1
7	3300061001	Fan Blade	1
8	3133524001	Motor Holder	1
9	3133528001	Left Hinge Support	1
10	5630473001	M10 Nut	1
11	2730374001	Fan motor	1
12	2828933001	Fan housing set	1
13	2828940001	Carry Handle	1
14	5640489001	Hexagon socket head cap screw	6
15	5650943001	Washer	6
16	3133527001	Right Hinge Support	1
17	2828913001	Battery Compartment Cover	1
18	5610902001	ST3 Torx type tapping screw	2
19	3133532001	Battery release button	1
20	3133535001	Battery locking block	1
21	3667800001	20mm Compression spring	1
22	3133531001	Battery Connector Support	1
23	3403401001	Battery Connector	1
24	3667801001	30mm Compression spring	1
25	3133557001	Battery Carrier Rod	1
26	3133556001	Locking Plate	2

27	4892570001	Motor PCBA	1
28	2831268001	BMS PCBA	1
29	5610904001	ST4 Torx type tapping screw	10
30	3133534001	Battery Box Side Cover	1
31	2828945001	Motor Locking Hoop	1
32	2828935001	Pump Motor ASSY	1
33	3133523001	Pump Motor Support	1
34	3133533001	Battery Bottom Cover	1
35	3133574001	Hinge Locking Knob	1
36	3133526001	Left Hinge 1	1
37	3133525001	Left Hinge 2	1
38	5690566001	Rubber damping ring	2
39	2828938001	Battery Box and Frame ASSY	1
40	2828934001	Filter ASSY	1
41	3133575001	Control Panel Back Cover	1
42	3133555001	Fixing Plate	1
43	2828937001	Control PCBA ASSY	1
44	2828947001	Soft Mat	1
45	2828936001	Control Panel Front Cover	1
46	3133522001	Wheel Cover	2
47	3403402001	Wheel	2
201	2828939001	Telescopic Handle ASSY	1
201-1	3667818001	15mm Compression spring	2
201-2	3133521001	Tube Stopper	2
201-3	5670673001	Steel Ball Pin	4
201-4	3580420001	Sliding Bush	2