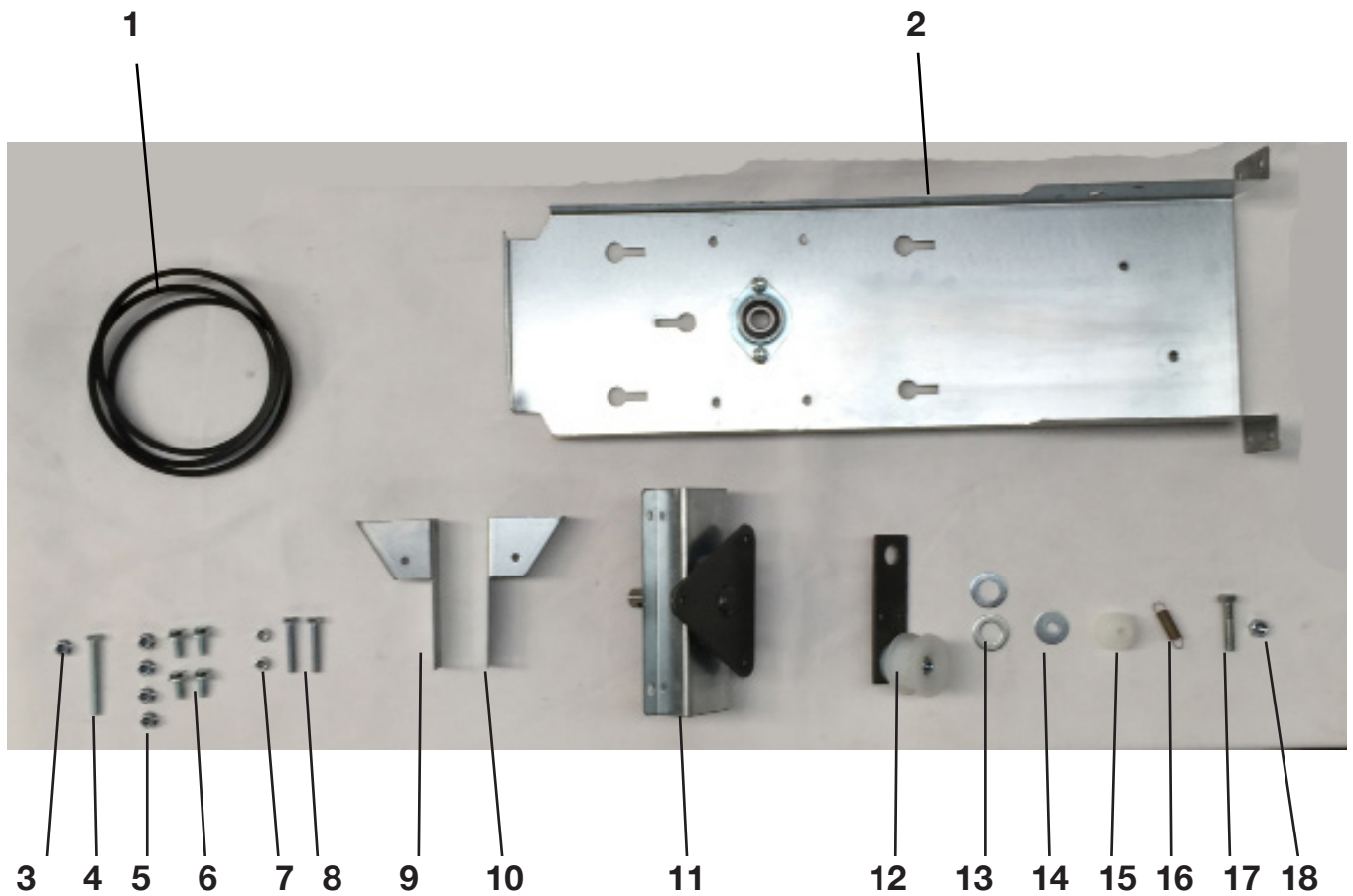




SPAREPART LIST / EXPLODED VIEW

Kwern
Made in Denmark

MODEL : GREENBUSTER PRO 66
MODEL NO. KWW0006A
YEAR : 2018



KEES VAN DER SPEK
TUINMACHINES * STOLWIJK

Pos.	Art no	Description	Dimension	Qty
1	55 00 80	Belt	Z66 10x1675	1
2	54 00 90	Chassis with bearing	(Ø25)	1
3	52 00 03	Locknut Flange	M8	3
4	52 00 45	Bolt	M8 x 75	3
5	52 00 03	Locknut Flange	M8	4
6	52 00 06	Flangebolt	M8 x 20	4
7	52 00 19	Locknut	M8	2
8	52 00 46	Bolt	M8 x 50	2
9	54 00 91	Bracket left		1
10	54 00 92	Bracket right		1
11	54 01 26	Shaft with bearing (Ø25)		1
12	54 00 78	Pulley arm with pulley		1
13	52 00 13	Large washer	20 x 3	2
14	52 00 47	Large washer	10 x 35	1
15	55 00 40	Bush		1
16	55 00 26	Spring		1
17	52 00 48	Bolt	M10 x 50	1
18	52 00 50	Locknut	M10	1

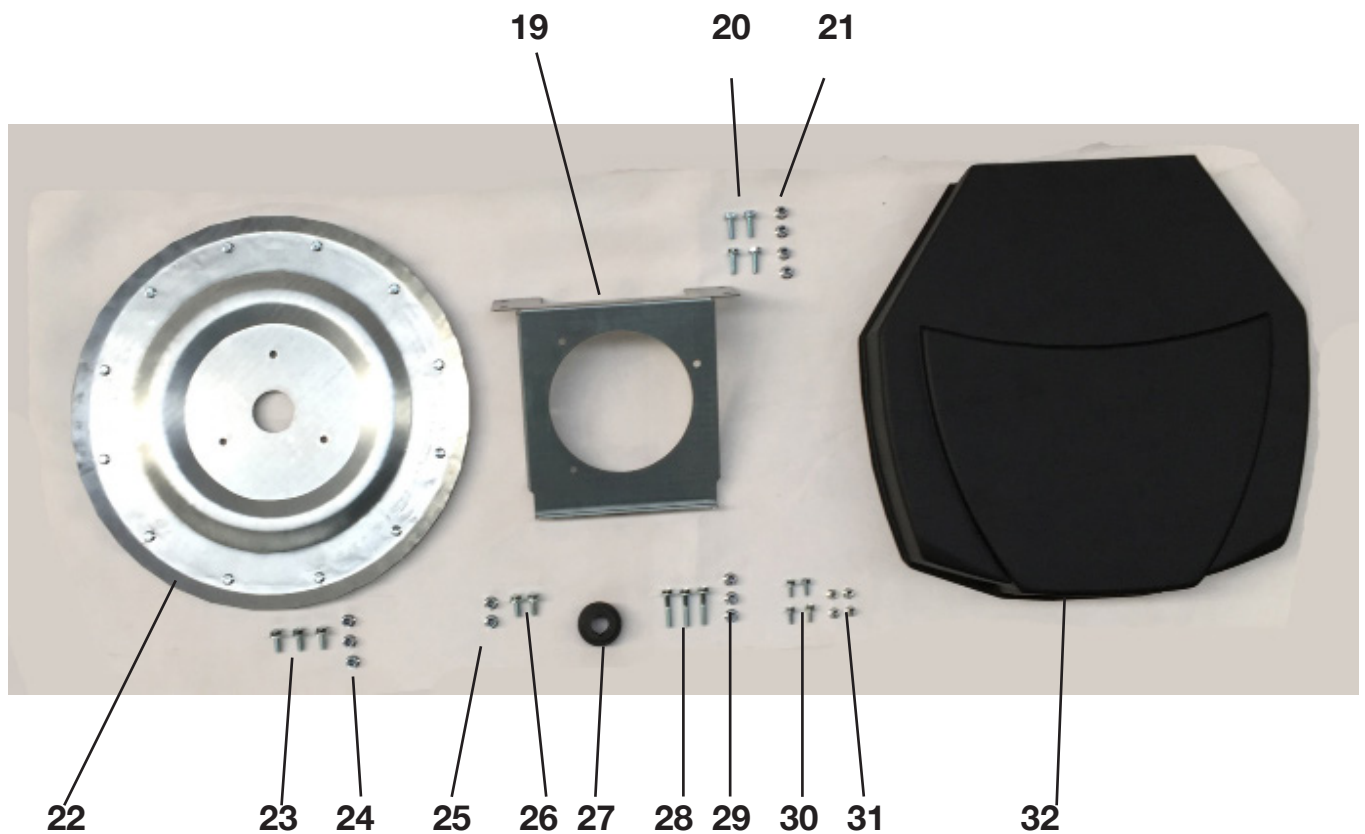
Kvern
Made in Denmark

MODEL : GREENBUSTER PRO 66

MODEL NO. KVV0006A

YEAR : 2018

www.kvern.com



Pos.	Art no	Description	Dimension	Qty
19	54 00 45	Engine Base		1
20	52 00 07	Flangebolt	M8 x 25	4
21	52 00 03	Flange locknut	M8	4
22	54 01 27	Pulley		1
23	52 00 06	Flangebolt	M8 x 20	3
24	52 00 03	Flange locknut	M8	3
25	52 00 03	Flange locknut	M8 x 20	2
26	52 00 06	Flangebolt	M8	2
27	55 00 75	Engine pulley	SPZ 50/1	1
28	52 00 39	Flangebolt	M8 x 40	3
29	52 00 03	Flange locknut	M8	3
30	52 00 34	Flangebolt	M6 x 16	4
31	52 00 02	Flange locknut	M6	4
32	55 00 64	Front cover		1

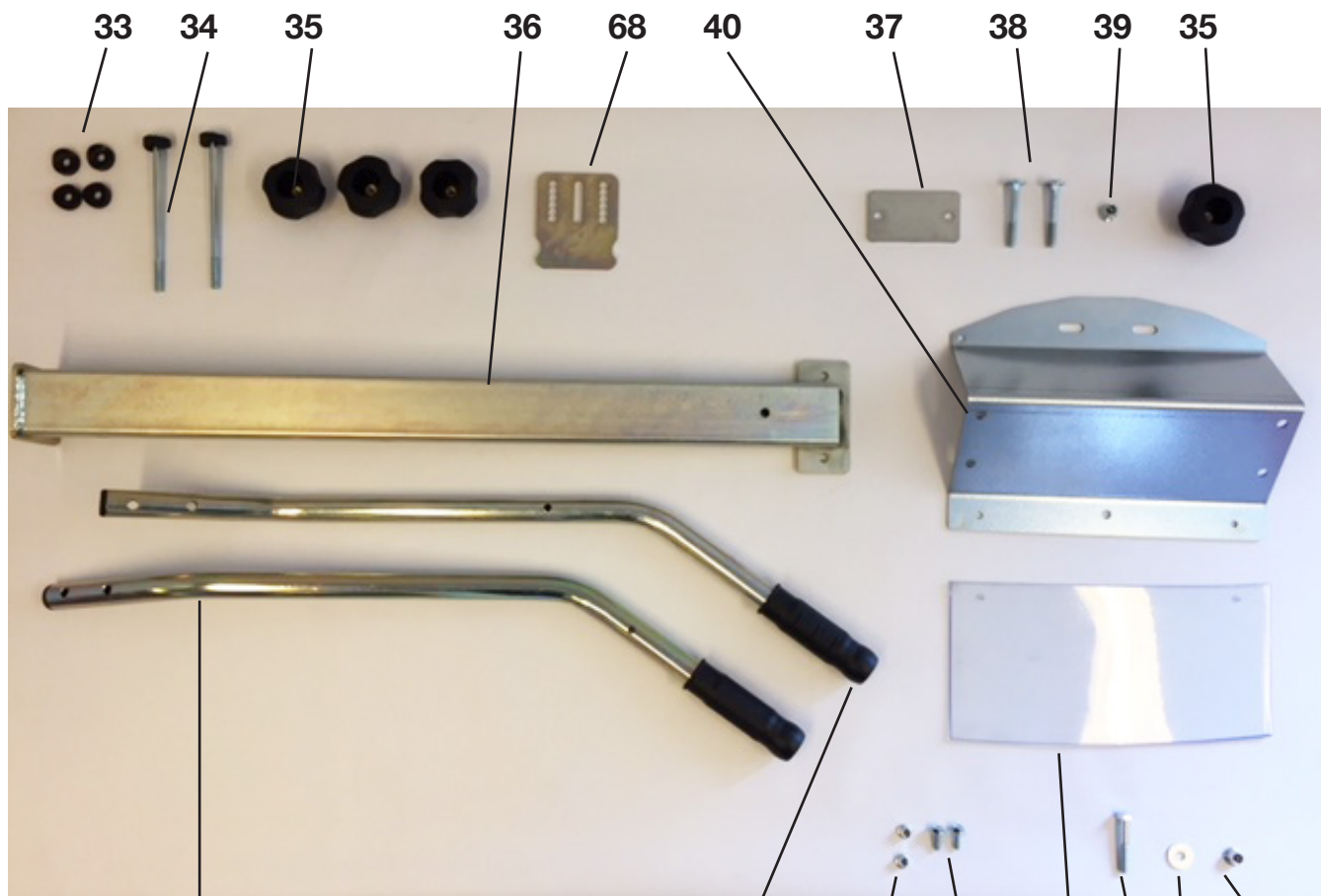
Kwern
Made in Denmark

MODEL : GREENBUSTER PRO 66

MODEL NO. KWW0006A

YEAR : 2018

www.kwern.com



Kees van der Spek
TUINMACHINES * STOLWIJK

Pos.	Art no	Description	Dimension	Qty
33	55 00 22	Plastic spacer		4
3	52 00 44	Bolt	M8 x 150	2
35	55 00 63	Knob	M8	4
36	54 01 02	Lower handlebar		1
37	54 00 43	Lockbracket for handlebar		1
38	52 00 37	Bolt	M8 x 60	2
39	52 00 03	Flange locknut	M8	1
40	54 00 42	Rearconsole		1
41	54 00 74	Handlebar right		1
42	54 00 73	Handlebar left		1
43	52 00 02	Flange locknut	M6	2
44	52 00 34	Flangebolt	M6 x 16	2
45	55 00 32	Protective cover		1
46	52 00 21	Bolt	M8 x 50	1
47	52 00 14	Large washer	M8	1
48	52 00 03	Flange locknut	M8	1
68	54 01 24	Lockplate for adjustment		1

Kwern
Made in Denmark

MODEL : GREENBUSTER PRO 66
MODEL NO. KWW0006A
YEAR : 2018

www.kwern.com



Pos.	Art no	Description	Dimension	Qty
49	55 00 56	Throttle cable		1
50	55 00 57	Clutchcable upper version		1
52	52 00 17	Locknut	M6	2
53	52 00 49	Bolt	M6 x 60	1
54	52 00 11	Bolt	M6 x 40	1
55	52 00 12	Bolt	M6 x 55	1

Kwern
Made in Denmark

MODEL : GREENBUSTER PRO 66
MODEL NO. KVV0006A
YEAR : 2018

www.kwern.com

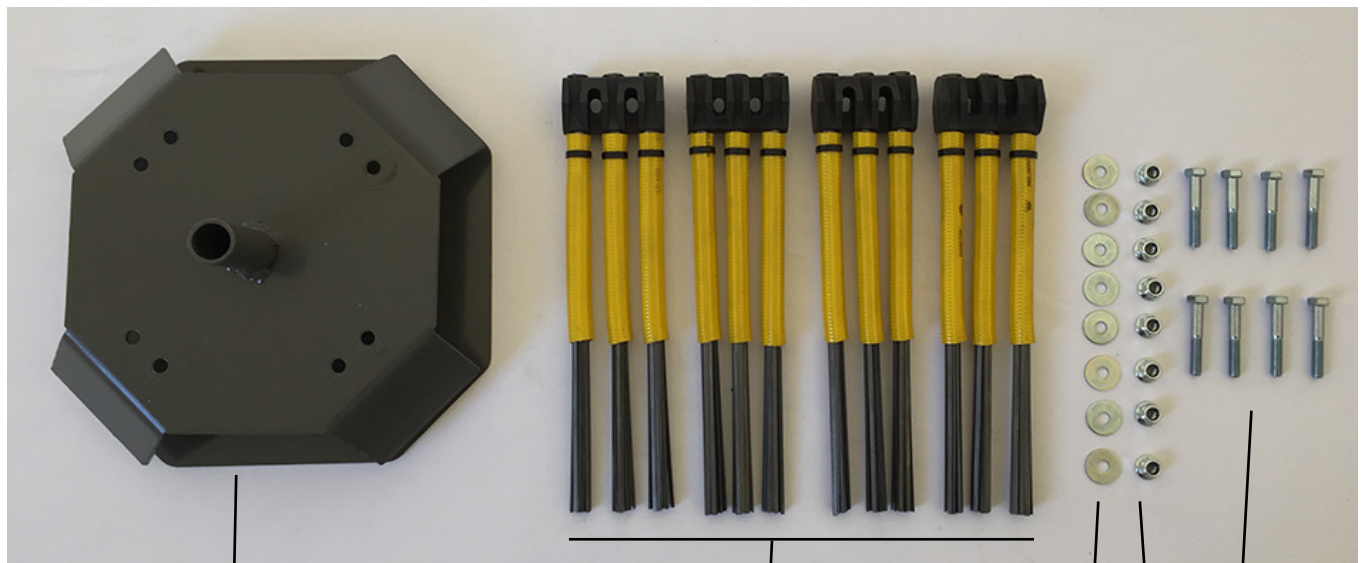


Pos.	Art no	Description	Dimension	Qty
56	54 00 70	Wheelshaft		1
57	55 00 66	Wheeltube		2
58	52 00 03	Flange locknut	M8	2
59	52 00 06	Flange bolt	M8 x 25	2
60	52 00 38	Lock-ring	20	2
61	52 00 13	Large washer	M20	4
62	55 00 38	Wheel	Ø250 x 60	2

Kwern
Made in Denmark

MODEL : GREENBUSTER PRO 66
MODEL NO. KWW0006A
YEAR : 2018

www.kwern.com



63

64

65

66

67

KEES VAN DER SPEK
TUINMACHINES * STOLWIJK

Pos.	Art no	Description	Dimension	Qty
63	54 00 88	Brushhead 4x3 Standard		1
64	28 40 06	Brush set 300 mm (set of 4 pcs)		1
65	52 00 14	Large Washer	M8	8
66	52 00 03	Flangelocknut	M8	8
67	52 00 21	Bolt	M8 x 50	8

Kwern
Made in Denmark

MODEL : GREENBUSTER PRO 66
MODEL NO. KWW0006A
YEAR : 2018

www.kwern.com