

## Application (Brushcutter) DS 3000 D

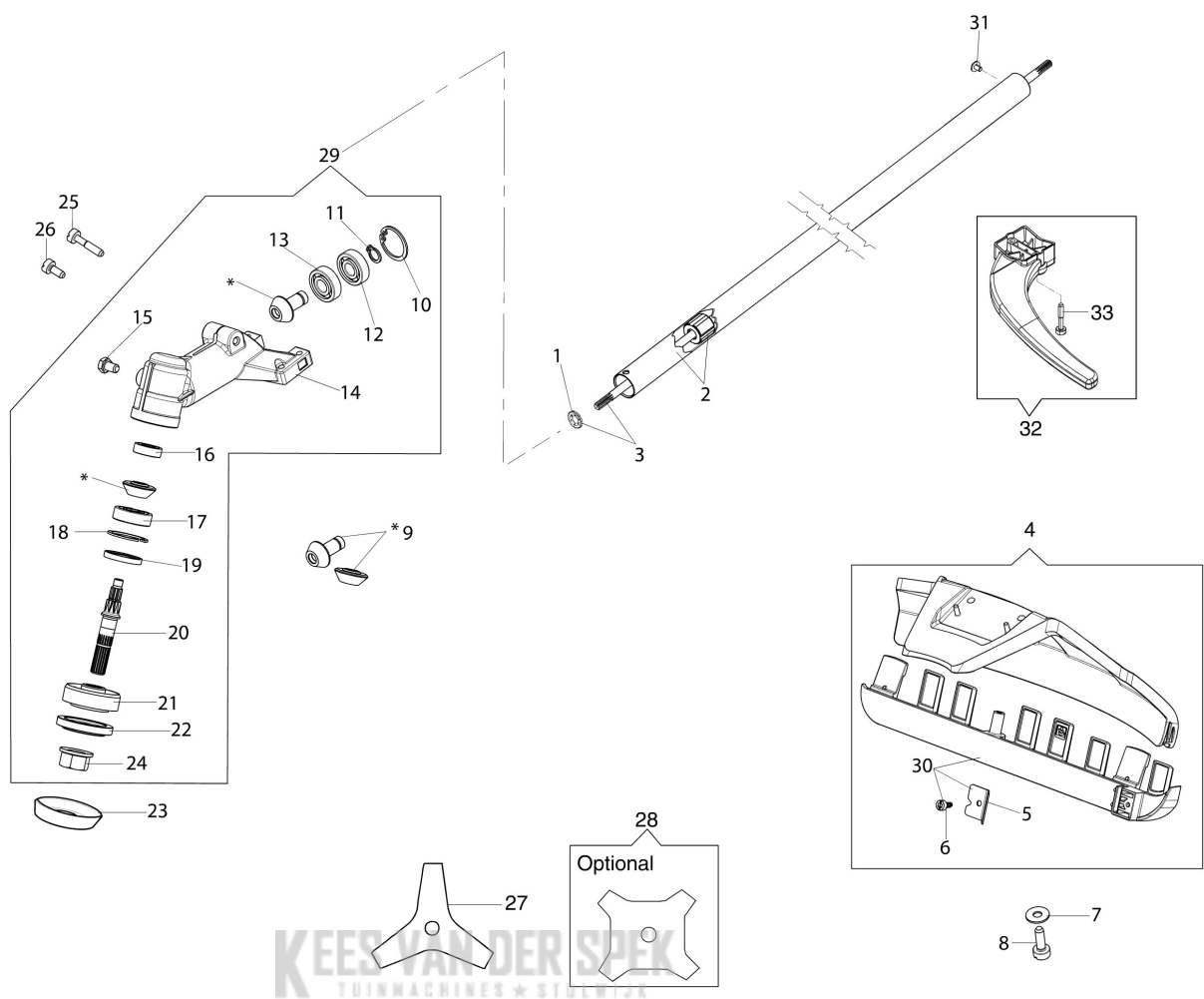


### Documenten

Brushcutter

Illustrated part list (Head "Load & Go" D.130)

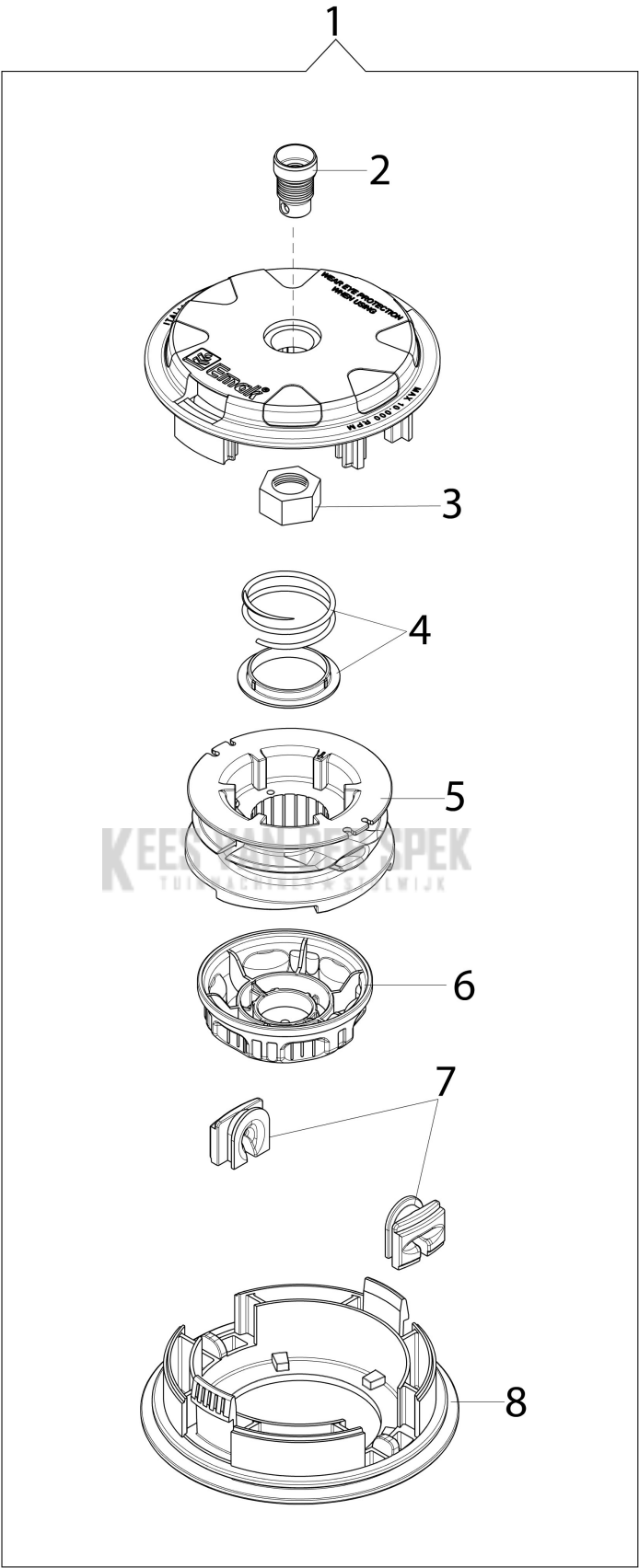
**KEES VAN DER SPEK**  
TUINMACHINES ★ STOLWIJK



## Illustratie Brushcutter

Ref.Nu	Qty	Part number	Description	Validity from	Validity till	Notes	Bulletin
1	1	3045034R	Retainer washer				
2	1	61282075R	Tube Ø26				
3	1	61370496	Complete drive shaft Ø7				
4	1	61280314	Guard kit				
5	1	61370161AR	Blade				
6	1	3893016AR	Screw				
7	2	094600054R	Washer				
8	2	3891038R	Screw				
9	1	61370298	Bevel gear set				
10	1	3025026	Ring				
11	1	3024009R	Ring				
12	1	3035044	Bearing				
13	1	3035043	Bearing				
14	1	61280134R	Gear case				
15	1	3906015R	Screw				
16	1	3035045R	Bearing				
17	1	3034008R	Bearing				
18	1	3025018R	Ring				
19	1	61170134	Seal ring				
20	1	61170122	Shaft				
21	1	61170123	Hub				
22	1	61170124	Lower flange				
23	1	61110074R	Guard				
24	1	3933105	Nut				
25	1	3891050R	Screw				
26	1	3891036R	Screw				
27	1	4095673BR	3-tooth blade				
28	1	4095681AR	4-tooth blade			Optional	
29	1	61280226AR	Kegelradantrieb Ø26				
30	1	61370636	Skirt w/blade				
31	1	3032027R	Rivet				
32	1	61380094	Guard				
33	2	3891051R	Screw				

**KEES VAN DER SPEK**  
TUINMACHINES ★ STOLWIJK



## Illustratie Illustrated part list (Head "Load & Go" D.130)

---

Ref.Nu	Qty	Part number	Description	Validity from	Validity till	Notes	Bulletin
1	1	63129007	Load & Go nylon head			Easy&LongLife	
1	1	63129014	Head Load&Go			ExtraLife	
2	1	63120041R	Insert				
3	1	63120040R	Nut				
4	1	63120031R	Kit spring				
5	1	63120020AR	Nylon spool				
6	1	63120007AR	Knob			Easy&LongLife	
6	1	63120030AR	Knob			ExtraLife	
7	2	63120001R	Bushing				
8	1	63120005R	Cover				

**KEES VAN DER SPEK**  
TUINMACHINES ★ STOLWIJK