

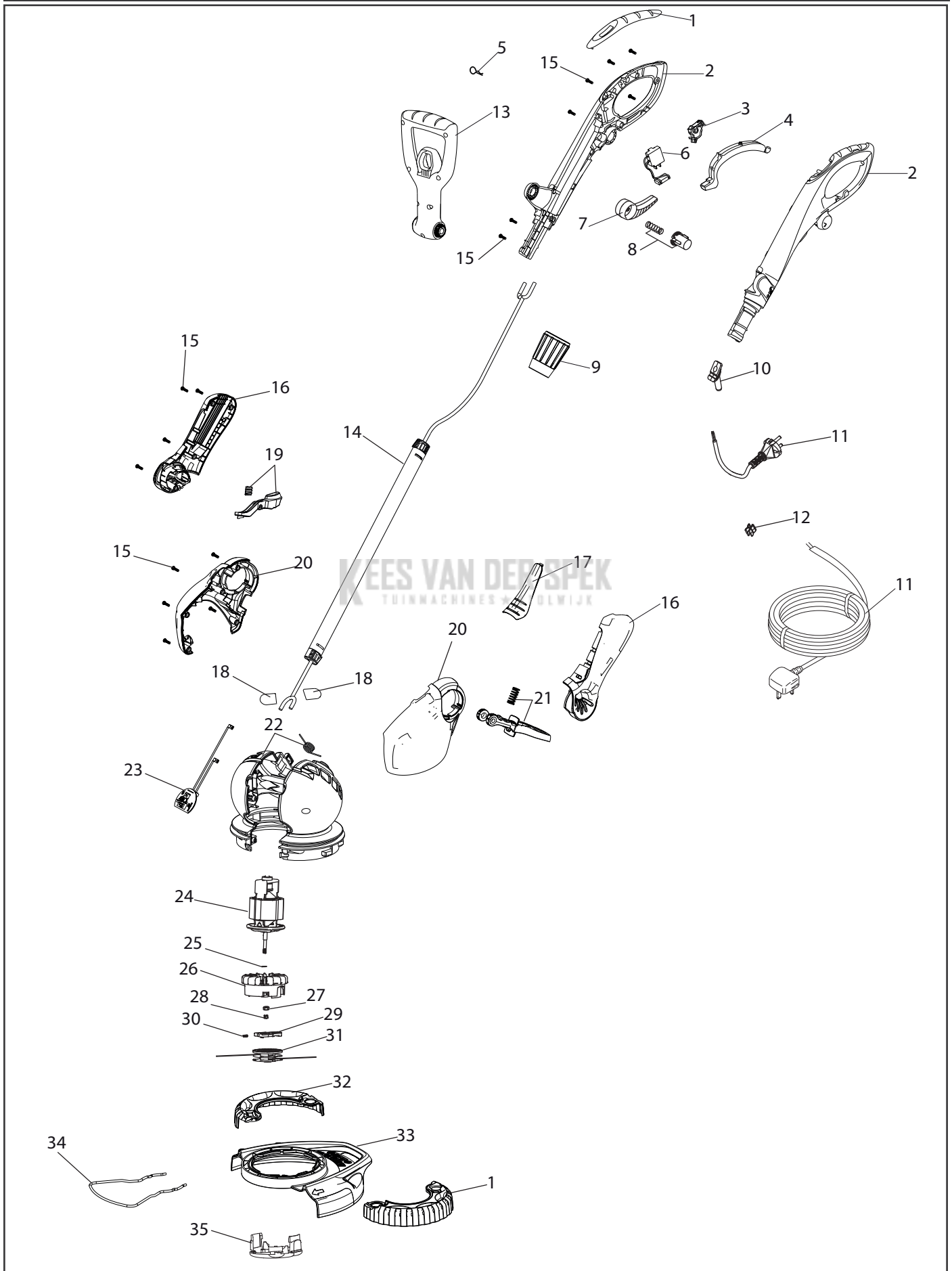
IPL, Flymo, Contour 500E, 9672414-01, 9672414-02, 9672414-31, 9672414-32

IPL, Flymo, Contour 580E, 9672416-01, 9672416-03

IPL, Flymo, Contour 650E, 9672417-01, 9672417-02, 9672417-32

Publication Number

AP1612001 replaces AP1506004



IPL, Flymo, Contour 500E, 9672414-01, 9672414-02, 9672414-31, 9672414-32

IPL, Flymo, Contour 580E, 9672416-01, 9672416-03

IPL, Flymo, Contour 650E, 9672417-01, 9672417-02, 9672417-32

Publication Number

AP1612001 replaces AP1506004

Item	Part Number	Description	Qty	Note
1	586 43 63-01	SOFT GRIP PAD	1	
2	586 44 32-01	UPPER HANDLE	1	
3	577 92 80-01	LOCK OFF (Inc. Spring)	1	
4	577 92 79-01	LEVER SWITCH	1	
5	577 72 92-01	SAFETY CLIP	1	
6	586 44 33-01	SWITCH (Inc. Capacitor)	1	
7	522 49 12-01	CABLE HOOK	1	
8	521 95 13-01	CABLE HOOK RELEASE MECHANISM	1	
9	586 43 51-01	LOCK RING	1	
10	522 72 99-01	GROMMET	1	
11	512 72 51-20	MAINS LEAD 15M	1	UK
11	511 97 11-00	MAINS LEAD	1	SA/EU
11	501 09 39-01	MAINS CABLE 12M AU	1	580E AU
12	522 49 17-01	CABLE CLEAT	1	
13	586 43 53-01	STEADY HANDLE ASSY	1	
14	586 44 36-01	SHAFT ASSY	1	500E
14	586 44 36-02	SHAFT ASSY	1	580E & 650E
15	522 49 08-01	SCREW PACK	16	Pack of 10
16	586 43 48-01	LOWER HANDLE	1	
17	586 43 61-01	COVER PLATE	1	
18	586 43 55-01	FILTERS	2	
19	586 43 62-01	BALL RELEASE LEVER ASSY (Inc. Spring)	1	
20	586 43 47-01	LOWER CLAMSHELLS	1	
21	586 43 56-01	FOOT PEDAL (Inc. Spring)	1	
22	586 43 54-01	MOTOR HOUSING (Inc. Spring)	1	
23	586 44 55-01	PCB BOARD	1	580E
23	586 44 56-01	PCB BOARD	1	650E
24	586 44 37-01	MOTOR	1	500E
24	586 44 38-01	MOTOR	1	580E
24	586 44 39-01	MOTOR	1	650E
25	514 02 66-00	WASHER	1	
26	586 44 41-01	SPOOL HOLDER	1	
27	514 86 83-00	NUT	1	
28	514 86 31-00	INSULATING CAP	1	
29	510 08 59-01	LINE FEEDER	1	
30	514 89 40-00	SPRING FOR LINE FEEDER	1	
31	513 93 71-90	SPOOL & LINE (FLY021)	1	500E
31	510 24 59-90	SPOOL & LINE (FLY061)	1	580E & 650E
32	586 43 57-01	WHEEL	1	
32	586 44 42-01	WHEEL	1	650E
33	586 43 60-01	GUARD & PIN	1	500E
33	586 44 43-01	GUARD & PIN	1	580E
33	586 48 53-01	GUARD & PIN	1	650E
34	586 43 59-01	PLANT GUARD	1	500E & 580E
34	586 44 44-01	PLANT GUARD	1	650E
35	505 51 35-90	SPOOL CAP	1	